

STAR-TS

Star-TS is a half height turnstile with metal tubular leaves. Elegant design makes it suitable for installation at entrances with the requirements of sophisticated product appearance. The range of modifications includes three and four leaves types as well as different type of metal finishing. Indoor application by default.



STYLISH & PRACTICAL SOLUTION

FOR SAFE AND SECURITY

 **563**
mm
PASSAGE
WIDTH

 **20**
pers/min
SINGLE ACCESS
FLOW RATE

 **60**
pers/min
FREE ACCESS
FLOW RATE

 **41**
IP
PROTECTIVE LEVEL

 **MOTORIZED**

 **BI-DIRECTIONAL**

 **ACCESS CONTROL
SYSTEM**

 **MANUAL
CONTROL**

Key features:

- Steel tubular leaves made of stainless steel that provides a high degree of resistance to vandalism
- Whisper quiet, low noise operation
- Successful combination of affordable price and high quality
- Possibility of a barrier gate customization
- Can be integrated with any type of access control systems
- Low power consumption
- Wired remote control panel is in standard kit
- Steadfast housing suitable for high traffic areas

Technical Specifications:

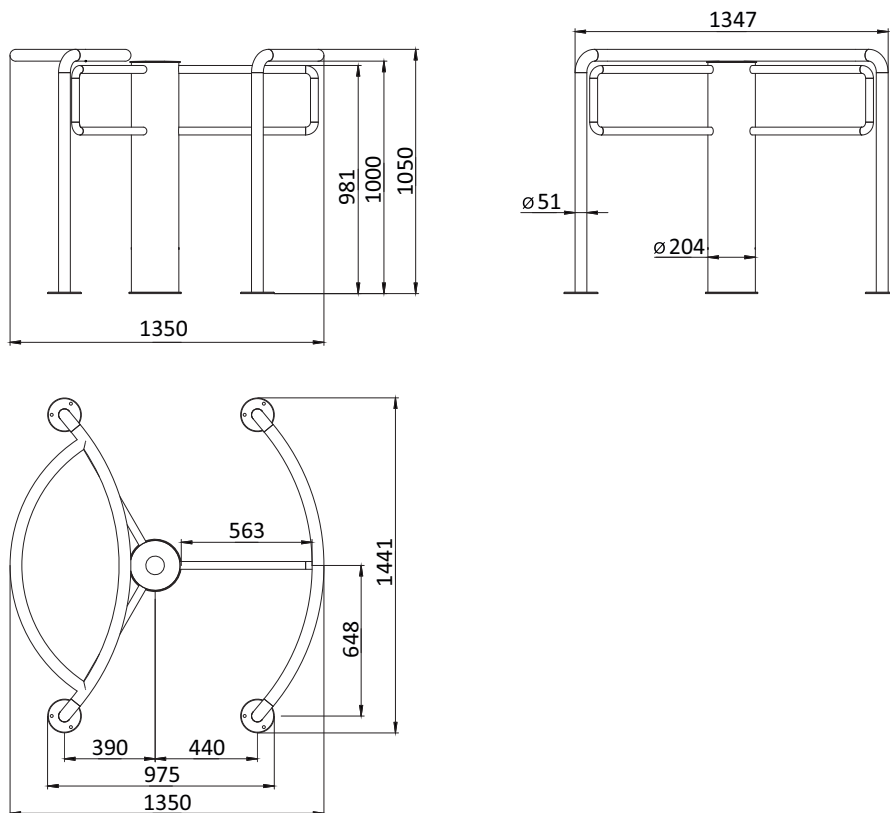
Model	Star-TS
Width, mm	1350
Length, mm	1441
Height, mm	1050
Passage width, mm	563
Mechanism	Servo-driven
Blocking system	Two electromagnetic stoppers
Emergency mode	Free pass in both directions
Power fail	Fail-safe (rotor is unlocked- standard)
MCBF, cycles	5 000 000
MTTR, min	< 25

Electrical Specifications:

Maximum power consumption, W	55
Voltage	From the AC (100-240)V, 50/60Hz; from a DC source 12 V

Finishing

Standard housing	Brushed SS AISI 304
Available housing	Brushed SS AISI 316; Polished SS AISI 304; Polished SS AISI 316; Powder coated RAL



Specifications are subject to change without prior notice.